



WWW.STAR-MAPS.CO.UK

ZODIAC CHILD REPORT

FOR

CHARLOTTE CHURCH

BORN:

21 FEBRUARY 1986

CARDIFF, WALES

Compliments of:-

*Caroline Moroz, Astrologer
BA, AGE Int. Dip*

Email: caroline@star-maps.co.uk

INTRODUCTION



Astrology is a complex and meaningful science which takes years to study and apply successfully. This report has been written to introduce you to the basic concepts of astrology for children. We hope it will encourage you to deepen your understanding of the subject through further study.

Astrology uses symbolism to explain the connection between planets and life on Earth. It is based on the concept that energy patterns form between the planets and Earth, and that these energies affect our lives as individuals and communities. An astrological chart, also known as a horoscope, natal chart, or birth chart, records the relationship between the planets and the signs of the Zodiac. Charts can be calculated for the birth of a person, a community, an event or anything that seems momentous. The horoscope is as individual and unique as a fingerprint.

The aim of this report is to act as a guide for parents and mentors of children. All parents want their children to live happy and fulfilled lives. All mentors and teachers would like to see children reach their full potential. This can be achieved by recognising and accepting each child's individual gifts and challenges in life. By doing this, we can help our children overcome obstacles and provide them with as many opportunities as possible to develop their talents. This report is intended to help parents and mentors to support and encourage their children through the difficult times and to provide them with as much love and joy as possible. Then childhood can become a true foundation for a rewarding and joyful adult life. Both children and their parents can be satisfied with a strong and healthy emotional bond, happy memories and many possibilities for future success.

When using these interpretations, please bear in mind that, inevitably, every chart will contain some contradictory influences and, as a result, certain interpretations of different items in the same chart may seem difficult to reconcile. However, this will still be an accurate reflection of a child's chart, as it is likely that any child will experience conflicting desires, events and circumstances in their life. It is the responsibility of a trained astrologer to synthesise these apparent contradictions in order to present a cohesive and meaningful interpretation of the dilemmas of each chart and the resulting relationship. Fully synthesised children's chart consultations are available from professional astrologer Caroline Moroz. She can be contacted via her website, www.star-maps.co.uk.

Any advice given in this report is meant as an aid to parents taking responsibility for their children's wellbeing. The ultimate decision for how best to act on behalf of a child's rests with each parent, therefore the author and editor cannot accept any liability for adverse effects which may arise as a result of this report.

FAMILY AND FRIENDS



"Being deeply loved by someone gives you strength while loving someone deeply gives you courage."
-- Lao Tso

The Moon

The Moon tells you about your child's emotional nature and basic needs. It is also the key to how they experience intimacy in relationships. The Moon tells you about your child's relationship with their mother, how they experience their mother's nurturing. As a result it can also give you insights on how to best nurture your child as a baby and maturing young adult. When a child feels safe and has their basic needs met, they are better able to achieve their goals later in life.

The Moon is in Leo

Charlotte is a joyful and happy baby thriving on her parents' love and affection. As a baby and a young child Charlotte loves to be the centre of the family's attention. As the first or only child Charlotte may be able to enjoy her parents' undivided attention, blossoming under the rays of their joy of discovery. However, if Charlotte has siblings, the parents' attention will have to be shared. In this case she may feel a need to fight to be noticed resulting in some dramatic sulks and attention-seeking activities. Charlotte needs a firm but loving hand, encouraging her self-esteem while teaching her the art of considering others' feelings and needs. Charlotte does not respond well to criticism, but thrives on praise. Charlotte needs to feel loved and appreciated. Having some time out may prove to be the best method of disciplining Charlotte, because she soon pines to be social again.

On the whole Charlotte is a fun-loving, affectionate and charming child enjoying a smooth, if somewhat dramatic path through childhood. Toys which may hold some appeal include games, dress-ups, play cosmetics, mirrors, play jewellery, playful toy animals and dolls, which can be dressed in different outfits for different fun activities.

The Moon is in the 10th House

Mother, or a matriarch in the family, is the most important person in Charlotte's young life, a shining example of how to behave in the world. Whether she acts like it or not, mother is seen as a Goddess. A strong bond is formed with mother at birth and this is likely to remain throughout Charlotte's life. Charlotte is like a little radar learning her behaviour from this matriarch. This ranges from simple tasks such as cleaning the house to larger issues such as moral behaviour. Therefore it is vital that Charlotte's mother lives her life wisely and responsibly. Her behaviour has far-reaching effects on this impressionable child.

A mother who is responsible and caring can help Charlotte learn skills that stand her in good stead for adult life, perhaps even influencing Charlotte's choice of career. The sign of Charlotte's Moon helps determine the extent of her sensitivity to her mother. A child with a Moon in the sign of Cancer, Scorpio, or Pisces is likely to be far more sensitive to her mother's feelings and moods. A child with a Moon in the sign of Taurus, Virgo or Capricorn is more likely to be influenced by the traditions followed by her mother. Those with a Moon in the sign of Gemini, Libra, Aquarius, Aries, Leo or Sagittarius may be more independently minded, although still strongly influenced by mother's ideas and values.

Venus

The planet Venus describes your children's personal relationships with family and friends. Like the Moon, Venus is important in describing how your child prefers to interact. This planet also gives vital information about your child's receptivity to love. This is important because children feel loved in different ways. Some children feel cherished when loved ones are paying them lots of attention, whereas others feel most loved when given the freedom to go their separate ways. Therefore gaining an understanding of the planet Venus in your child's chart can give you insights into how to encourage rewarding relationships with family and friends.

Venus is in Pisces

Astrologers consider the planet Venus to be well placed in the sign of Pisces resulting in satisfying relationships with friends and family. Charlotte is a warm and loving child, enjoying intimate relationships with loved ones. Charlotte is a sensitive child, able to understand others' feelings. However, she is easily hurt by harsh words. Charlotte likes harmonious interaction, and often tries to escape into a world of her own if confronted with an angry companion. Once the mood has calmed down, then Charlotte is ready to play again. She has a very forgiving nature, except under extreme circumstances. Even at a young age Charlotte is likely to understand the nuances of relationships, possessing an ability to listen to and appreciate other people. Charlotte is a little helper around the home and enjoys social contact.

There is a tendency for Charlotte to look after her friends and family members a little too much at times. Parents and mentors need to encourage Charlotte to learn to discriminate between those who want and need help, and those who are better left alone. They also need to ensure that Charlotte is not put in the position of prematurely caring for older members of the family. In other words parents and mentors need to be wary of relying too heavily on Charlotte's kind and forgiving nature. Charlotte benefits from an affectionate pet. The unconditional love of a pet is a great source of comfort to her. In turn Charlotte is happy to spend time looking after a pet. She may also enjoy water activities including joining the school's swimming team or simply socialising with friends at the local swimming pool.

Venus is in the 5th House

Charlotte is a light-hearted and fun-loving child, who enjoys interacting with other children and family members. Family and friends enjoy Charlotte's company. There is no shortage of people wanting to take Charlotte on outings. Charlotte particularly enjoys any activity linked with beauty or art such as being able to dress up in beautiful clothes or going out to a colourful theatre performance. She may have a talent for music, art, dance, theatre or an artistic craft. This depends on the sign of Venus. A child with Venus in the signs of Leo, Pisces, Libra or Taurus is more likely to have an artistic bent. A child with Venus in the other signs of the zodiac is more likely to express this creative streak in a different manner.

Charlotte enjoys playing games and having fun, perhaps avoiding taking part in her share of the daily chores. She is either too busy entertaining herself or too focused on her own creative projects to respond to other people's demands. Although Charlotte likes to play with other children, she is not so keen to share her belongings. She prefers to make the most of her friend's resources rather than share her own. Parents need to teach Charlotte the benefits of sharing. However, this is a minor point. On the whole, Charlotte is an easy-going child with a taste for the finer things in life.

TALENTS AND SCHOOLING



"Dance like no one is watching. Sing like no one is listening. Love like you've never been hurt and live like it's heaven on Earth." -- Mark Twain

The Sun

The Sun represents your child's identity. It describes your child's basic personality traits and their talents. It also tells you how your child thinks of themselves; how they need to express themselves; how they need to shine in their lives; how they feel alive. It is the centre of a child's self-expression. The Sun can also tell us about a child's father.

The Sun is in Pisces

From the moment that Charlotte is born her parents are moved by a strong need to protect this vulnerable young person. Charlotte is sensitive and imaginative, if somewhat impractical. Soft music, artistic surroundings, and the fantastical world of television and books provide wonderful escapes from the real world for Charlotte. She also benefits from nature trips and seaside outings. This is a child who identifies more with the realm of imagination than the demands of day-to-day life.

As a youngster parents are delighted by this charming pixie. However, they may worry a little about how sensitive Charlotte is going to cope outside the protection of home and family. A caring childcare centre or kindergarten environment does not present problems unless run under a strict regime. However, school could present some problems. Parents and teachers need to do all that they can to ensure that the transition to school is a smooth one because Charlotte finds the demands of a structured routine difficult to say the least. Charlotte is a daydreamer, a creative soul, but forgetful. She is often lost in a fantasy world and this doesn't sit easily with the demanding schedule of school bells, timetables and homework notices. At home Charlotte is likely to sit in the middle of her bedroom surrounded by mess listening to her favourite musical melody or reading her latest book.

It is possible that Charlotte has a talent for music, art, drama or dance. These can be encouraged at a young age, gently teaching the discipline and determination needed to develop artistic talents. Charlotte may also be gifted at caring for other people. It is important to discourage any tendencies towards victim-like behaviour, although this may be easier said than done. Charlotte is inclined to identify with the lost souls of the world, and needs to be persuaded to see the riches in her own life. This way she grows into a caring and loving adult capable of pursuing her own talents in a balanced manner.

The Sun is in the 5th House

Charlotte is a joy, full of smiles and responsive to all efforts to entertain her. Fun loving Charlotte loves to play. A wide range of toys is beneficial for Charlotte; however, she delights in any creative activity. She has the ability to turn any item into a toy. Charlotte is likely to respond well to music, art, crafts, sand play, water, clay or the dramatic arts. She may well show an outstanding ability at a young age. It is important that Charlotte's parents and mentors, in particular her father or a male mentor encourage her creative expression. The challenge for Charlotte is knowing when to stop playing and when to start work. Although she has the ability to make most things seem like fun, there are times when she has difficulty concentrating. This is particularly true for a child with the Sun in the sign of Gemini, Libra, Aquarius, Aries, Leo, Sagittarius or Pisces. A child with the Sun in the sign of Cancer, Scorpio, Taurus, Virgo or Capricorn is more likely to be able to combine creativity with concentration.

Mercury

The planet Mercury describes your child's intellectual abilities. The sign and placement of Mercury can describe whether or not your child finds it easy to concentrate at school. Your child may be a daydreamer or have great concentration. Your child may be shy or interact easily with other people. Either way it is possible to boost your child's self-esteem by choosing study methods and schooling that suits their needs rather than forcing them to fit into an alien environment. Gaining an understanding of the planet Mercury can help in these matters.

Mercury is in Pisces

The placement of the intellectual planet Mercury in the emotional sign of Pisces is difficult. Charlotte has trouble finding the right balance between her "head" and her "heart". As a result she is often confused when faced with decisions or with learning tasks. Charlotte is also highly sensitive to criticism, which means that she hesitates before committing to a course of action or making a decision. Basically Charlotte is scared of making mistakes and disappointing her loved ones. She needs plenty of encouragement and to be shown that making mistakes is part of the learning process. Parents and mentors may feel impatient with Charlotte's vacillating ways, but it is important that caring adults show as much love and patience as possible.

The transition to school is a real challenge for Charlotte. Depending on other aspects of her birth chart, Charlotte is likely to find the structure of school days difficult. She is a child with a vivid imagination, who prefers to daydream and think up creative schemes rather than settling down to concentrated learning. Teachers require plenty of patience to re-direct Charlotte's daydreams into school tasks. For this reason Charlotte may also benefit from an alternative school, which encourages creativity, rather than a structured traditional school. The choice of school could well be one of trial and error.

Self-confidence is a major challenge for Charlotte. The results of untiring and caring instruction are well worth it. As Charlotte learns to trust her own instincts and the fear of making mistakes lessens, she blossoms. Charlotte is a warm and loving child with quite remarkable listening skills when it comes to relating on a personal level.

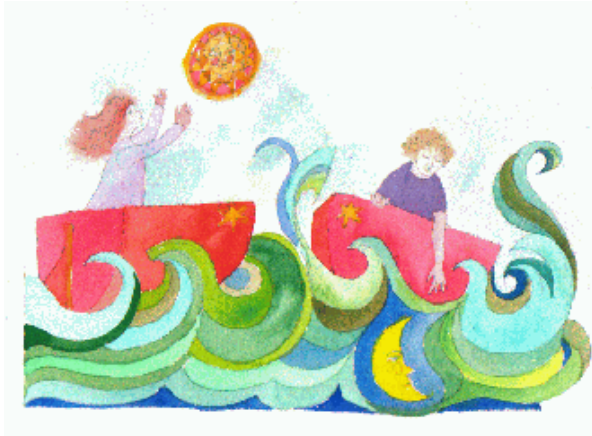
Mercury is in the 5th House

Charlotte has a quick wit. As a young child this becomes obvious, as Charlotte loves to play word games, giggling with delight over certain word associations. As she matures her wit blossoms. Friends and relatives enjoy this side of Charlotte's nature, but teachers may not be so impressed as lessons are likely to be disrupted by Charlotte's clownish antics. This does depend on the rest of Charlotte's birth chart. She may have a more serious side to her nature that balances this impish trait. Charlotte's love

of words needs to be directed in positive outlets such as reading and writing. She may have a real talent for creative writing or for public speaking, but only if it is fun.

Charlotte finds it difficult to concentrate on anything that she considers being boring. Charlotte enjoys reading, but mostly for fun. Concentrated study is not so appealing. She also enjoys puzzles and games, particularly games of strategy and wordplay. The challenge for parents and mentors is to maintain an element of entertainment in all lessons. For this reasons Charlotte benefits from a less formal school environment. Teachers and parents may also note that a sense of humour is a handy tool in diffusing many an emotional moment with Charlotte.

GOALS



"The future belongs to those who believe in the beauty of their dreams." -- Eleanor Roosevelt

The Ascendant

The Ascendant, or Rising Sign as it is sometimes called, is considered an important component of an astrological chart. Ancient astrologers believed that the Ascendant depicted a person's primary motivation. Some believed that it was one of the links to discovering what makes a person happy. It could be said that when we're accomplishing our primary motivation then we're happy. By gaining knowledge of a child's Ascendant and discovering this child's primary motivation in life, parents and mentors can then help them achieve their goals. Caring adults can encourage the child with love and support. In turn your child experiences a sense of happiness and fulfilment.

The Ascendant is in Libra

Charlotte is likely to actively seek her goals in life, taking the initiative rather than waiting until circumstances are comfortable. She also wants to achieve these goals through the co-operation of other people. Libra is a Cardinal sign denoting enterprise, enthusiasm, self-assertion and initiative. However, it also an Air sign indicating a love of ideas, communicating and intellectual prowess. Relationships play a central role in Charlotte's life, even at a young age. As a baby Charlotte thrives in a calm and harmonious household, one in which her parents communicate with love and understanding. As she grows older Charlotte enjoys relating with other children and adults. Charlotte is courteous, affectionate, thoughtful, modest although perhaps a little indecisive at times.

Relationships are Charlotte's primary motivation in life. For this reason little Charlotte is eager to please others to the extent that she forgets to please herself. Parents may need to remind Charlotte to attend to her own need as well. It is also important that Charlotte is taught at a young age that her parents' relationship is their own concern. Much of Charlotte's happiness depends on whether or not her loved ones are happy. Therefore she may try to "fix" situations beyond her control. Parents can gently remind Charlotte of her special qualities and offer reassurance during emotionally turbulent times, which are an inevitable part of human affairs. Charlotte is a child who benefits from social contact and enjoys a pleasant and easy-going childcare arrangement, kindergarten or school.

Mars

Ambition and drive, like many traits, can be powerful positive forces in your child's life, helping them achieve their dreams. Too much ambition can hinder your child's ability to collaborate. On the other hand, without motivation your child may not be able to establish a healthy sense of self and

successfully leave home and family. Studying Mars, the planet of drive and energy, assists parents and mentors as it describes vitality in your child's birth chart. If our children are free to pursue their own dreams and ambitions, their joie de vivre is a wonderful thing to see. By understanding the placement of Mars in your child's chart, you can help support their goals. You gain insight into whether or not your child lacks motivation in certain areas and why. You can also see if your child has an excess of passion. As a result you can either patiently try to motivate your child, or you can provide plenty of stimulation and direction.

Mars is in Sagittarius

Charlotte is an independent and honest child. From a young age, she is determined to do things her own way, even to the point of acting without thinking. Charlotte thrives when given the freedom to pursue her own goals within safe limits. Parents and mentors need to make sure that Charlotte learns from her experiences, but does not suffer any ill effects of rash action. Charlotte has plenty of energy and initiative and likes to explore new territory and activities. She enjoys playing outdoors. Charlotte needs minimal parental guidance, just enough to keep her safe. She has abundant self-motivation.

However, Charlotte can also be stubborn, refusing to co-operate within other people's time frames. Charlotte is so focused on her own ambitions that she doesn't want to be interrupted or distracted by other people's objectives. She can be very rebellious, either noisily or quietly refusing to collaborate. She hates restrictions and delays. For these reasons Charlotte responds best to liberal teaching methods, rather than authoritarian ones. In other words she can be taught, rather than forced, to slow down and consider other people. Sports can be beneficial in teaching teamwork. However, Charlotte is likely to prefer individual sports such as horse riding, fencing, archery, mountaineering, athletics, cycling and hiking. As Charlotte grows older, she also enjoys travelling.

Mars is in the 2nd House

Charlotte has a strong drive for security. As a young child she enjoys owning an abundance of toys and games, but she may have difficulty sharing these with other children. She may form a strong attachment to one toy or possession. Parents and mentors need to allow Charlotte to keep one or two favourite possessions for herself while encouraging her to share other toys. As Charlotte matures she benefits from earning pocket money and being permitted to manage her own funds. Parents and mentors may be surprised by Charlotte's ability to accumulate and save money. She is a real little bargain hunter! She is quite enterprising in developing schemes to earn money or grow savings. This child is a whiz on the Monopoly ® board. On the other hand Charlotte also keenly feels any loss of money or possessions. Whereas other children may not be concerned about wealth, Charlotte is acutely aware of her family's social status. Parents and mentors need to support Charlotte's motivation for material goods, but also to teach her about things that don't have a price tag attached such as sharing intimate moments with loved ones or enjoying outings in nature. This child really benefits from lessons about the importance of giving as well as taking. As a result she develops an ability to pursue sound moral values, while also enjoying material riches. The latter does of course depend on other aspects of Charlotte's birth chart.

CHILDHOOD JOURNEY



"Nothing great was ever achieved without enthusiasm." -- Ralph Waldo Emerson

Wouldn't it be wonderful if we could isolate one trait in our personalities, capture it in a glass for observation and dissection? Of course this is not possible. Neither is it possible for us to isolate one part of a birth chart. The different aspects of our child's birth chart intermingle in a complex manner to make the little person that we know and love. However, it is possible for us to influence the development of our child, to support them in their journey. The aim of this section is to give vital clues for parents and mentors on how to guide, but not coerce, the development of your child.

Pluto is Square The Moon

Charlotte is a sensitive and reflective child with a strong emotional nature. As a baby Charlotte is likely to form a strong bond with her mother or another important female caregiver. This bond plays a crucial role in her upbringing. The advantages of this are that Charlotte enjoys an intensely rewarding relationship with an important woman, which helps her blossom as a young adult. She learns how to express her feelings in a positive manner within a safe and rewarding relationship. However, it is also possible that Charlotte can demand a little too much from the woman in her young life, and therefore feel disappointed when someone important fails to live up to her expectations. As a youngster this is the likely time when Charlotte's intense feelings erupt in the form of tantrums. Therefore it is important that Charlotte is allowed to express her feelings in a safe manner, but that any manipulative behaviour is not rewarded.

Hobbies and pastimes that either demand concentrated effort or that encourage emotional self-expression are important. These could include the dramatic arts, energetic sports, or building models. A pet could also be an ideal way for Charlotte to learn about the emotional side of relationships.

Jupiter is Conjunct The Sun

Charlotte is a sunny and optimistic child with an infectious smile and joie de vivre. Baby Charlotte is welcomed into a warm and loving family. Charlotte's father, or grandfather, is particularly excited by her birth and a warm and loving bond results. Charlotte responds well to her father's praise, or to the positive comments of any male parental figure. She may share a close bond with her grandfather. These positive childhood relationships with adult males augur well for Charlotte's relationships with men throughout her life. A generous child, Charlotte enjoys new experiences and adventures. She has no trouble playing with other children, sharing her toys. In fact her infectious personality attracts many playmates. Charlotte is kind and helpful and, depending on other factors in her birth chart, is likely to be a contented and well-loved child.

Neptune is Sextile The Sun

Charlotte is a creative child, who longs for a close and caring relationship with her father or a man who can act as a father figure. Charlotte is also a sensitive child who needs gentle support from an important man in her life. It is also possible that she has an artistic talent or an interest in spirituality that ideally needs to be nurtured by a father figure.

This is a child who needs to be encouraged by her father to trust her own instincts. Harsh discipline could cause such a gentle natured child to become cowardly and frightened. Rather she needs her father to help nurture her innate talents and interests. One of the problems with this influence is that Charlotte's father seems destined to play a rather weak role in her life. Perhaps Charlotte's father is unable to provide this close, supportive emotional bond through circumstances beyond his control such as his profession demanding frequent absences from home. In some cases father may be a weak man either in his personality or through illness or alcoholism.

Whatever the circumstances it is important that some gentle means can be found to provide Charlotte with a positive male influence. Otherwise she is likely to develop attention-seeking traits such as bed-wetting, minor illnesses and sulking. Perhaps a male member of the extended family, a teacher at school or a mentoring program could be of help. This way Charlotte's creative and compassionate nature can be encouraged. Fantasy stories, musical instruments and recordings, paints and crayons, time spent in nature and dance can all play a positive part in helping Charlotte shine in the world. Other aspects of Charlotte's birth chart could affect this planetary influence. For further information about the exact nature of this astrological signature it may help to consult a qualified astrologer on a one-to-one basis.

Pluto is Trine The Sun

Charlotte is a powerful child, challenging herself and those who love her to stand up and take notice of life's abundance. She is curious and keen to explore new territory. If extroverted then Charlotte is likely to end up in trouble as a result of her curiosity and ensuing adventures into the outside world. She is a real character, a regular Tom Sawyer or Pippi Longstocking. However, a more introverted child may simply enjoy spending time on her own studying the inner workings of toys, nature and/or household equipment.

From the moment of birth Charlotte's father plays a pivotal role in her life. Her childhood relationship with father, or a strong father figure, determines the extent to which she feels able to carve her own niche later in life. Charlotte is likely to adore her father as a young child. As the patriarch of the family he earns respect of those surrounding him. A growing child keenly notices this. However, there may be a time when this adoration is transformed by a sense of betrayal. This is not necessarily within father's control. No-one can live up to God-like expectations. However, he can make sure that Charlotte feels supported as much as possible.

Both Charlotte and her father have strong personalities and therefore they clash, each determined to express their own views or have their own way. It is important that Charlotte's father shows self-restraint, otherwise these clashes could become violent. He needs to ensure that Charlotte is kept safe, away from emotional, verbal and physical abuse. In other words Charlotte's father needs to provide a safe environment in which he and Charlotte can both assert their own wills and gain greater understanding of themselves and each other. If this is not achieved then Charlotte loses a sense of her own identity and cowers in the face of adversity. She eventually rebels, probably in her teenage years. However, if Charlotte's father can allow her the freedom to develop her own powerful

personality then Charlotte is likely to develop great personal power, the ability to lead others and to achieve her own goals.

The theme of death can also play an important role under this influence. Charlotte is both more sensitive to the grief process and also more able to grow in strength through being gently guided and supported through this process, be it the death of a family member or the death of a pet.

Mars is Square The Sun

Now here is an active youngster! Charlotte loves to be stimulated and is keen to have a go at most things. In fact she is likely to experience all sorts of adventures at a young age. Although Charlotte won't thank anyone who stops her exploring, she does need some guidance, particularly from her father.

Charlotte needs to learn how to safely take part in activities that are challenging. Otherwise she will be the sort of child who is making regular visits to the doctor for bumps on the head and other such accidents. Charlotte just loves to take risks. Her abundant energy can be channelled into safe activities such as football, netball, basketball, cycling, fencing, or any sport that requires energetic application. Charlotte's father plays an important part in her life, although at times there may be arguments and clashes of will. Nevertheless Charlotte enjoys a firm and kind male influence. The lesson for the important man in Charlotte's life is patience and assertion, definitely not aggression! Charlotte has quite a temper when roused, and so it is vital that parents make every effort to distract her attention, provide plenty of demanding activities, and remain calm. If all else fails, time out in a safe environment could give everyone some much-needed peace.

Saturn is Square The Sun

Charlotte's relationship with her father plays an integral role in her life, probably from the moment of birth. It is even possible that Charlotte has been named after her father or the father's family's name, or a close friend of her father, or that her father chose her name. Hence the bond starts at birth. This bond can be a positive one in the long term; however, it is possible that Charlotte's father is initially somewhat strict or oppressive. Perhaps he feels protective of Charlotte, not realising that all young people need freedom to explore. Or perhaps he is simply a disciplinarian with difficulty expressing the love that is in his heart. Either way Charlotte is likely to feel limited in her self-expression as a child, particularly before the age of 14. As a result her self-esteem could suffer. She may be a serious and somewhat shy child. It is important that Charlotte's father, or father figure in her life express a lot of praise and affection to help balance the discipline. This way Charlotte grows into a well-balanced young person, secure in the knowledge of her ability to achieve her goals with the support of important men in her life. She will have the self-discipline to succeed. In some cases it is not Charlotte's father that takes this stern role, but another adult male in her life. Therefore all of the above would apply to this man, not her father. It is also possible that problems can be experienced early in life because of Charlotte's relationship with her father or a father figure. If this is the case then it is likely that Charlotte will face these challenges, grow in wisdom and achieve success later in life, particularly from the age of 29 years.

Uranus is Square Mercury

Charlotte is a little rebel. She is intelligent, quick to grasp concepts and to make up her mind. Once her mind is made up, she is unlikely to change it. Charlotte is wilful. This is a challenge for parents and mentors because Charlotte can be quite uncooperative.

Even as a youngster Charlotte is opinionated and prone to argue rather than listen to adult advice. Charlotte needs to learn by experience and is constantly testing limits. Parents and mentors can influence Charlotte positively by making sure that all rules are fair and consistent. Charlotte also needs to be given plenty of freedom to explore her environment and learn new activities within safe boundaries. Charlotte is likely to act before she thinks of the consequence. Her rash behaviour can get her into all sorts of trouble. She does not respond well to physical discipline. Parents would be advised to try innovative discipline approaches such as having some quiet time in her room. Charlotte soon misses the stimulation of other people's company and household occurrences. She is more likely to rebel against authoritarian parenting methods of her father, or a father figure.

Charlotte does well at school in an erratic kind of manner. Left to her own devices, she can quickly rise to the top of the class. However, she can also easily plummet once she loses interest or if she clashes with a teacher. Plenty of patience is needed to help Charlotte overcome her wilful ways and to learn to consider other people.

Saturn is Square Venus

Charlotte needs plenty of love and approval to successfully develop in childhood. She is naturally shy and hesitant to form close bonds with friends and family. This may be the result of friction in the family home, or a separation from a parent at an early age or it could simply be part of her personality. Whatever the cause, Charlotte finds it difficult to trust loved ones. She finds it difficult to accept affection. She withdraws into a world of her own rather than asserting herself. Patience and love reap rewards. Charlotte may never be an outwardly warm and spontaneous child, but with constant tenderness and affection from her parents, she can develop in the knowledge that she is worthy of love. Slowly and surely parents can teach Charlotte to trust loving contact rather than fear it.

Charlotte is particularly sensitive to antagonism by her mother. Therefore it is important that Charlotte is able to experience warmth and understanding from her mother, or an important female member of her family.

Parents and mentors also need to encourage Charlotte to interact with friends. She may relate better to older children, but it is important that she also learns to play with children of her own age. Charlotte is likely to feel more comfortable with a small circle of true friends, rather than with many acquaintances. In rare cases this combination of the planets Saturn and Venus can simply act to slow down a very gregarious child, giving her the ability to form close ties with many friends.

Pluto is Trine Venus

Charlotte forms strong emotional connections with friends and family. She is more likely to single out one friend or family member, rather than relate to many. This starts when Charlotte is a baby and she forms a close attachment to her mother or a mother figure. Charlotte demands this woman's full attention, refusing to share her mother with siblings or anyone else. On the one hand this can be a positive trait. Charlotte is able to fully depend on a caring adult and therefore develop good self-esteem in the knowledge that she is deeply loved. She is able to deeply love in return.

A passionate child, Charlotte throws herself wholeheartedly into her own life and relationships. Loved ones respond, aiding her development through the different stages of childhood. On the other hand Charlotte's intensity can cause some problems. Charlotte may closely guard her relationship with her mother. Siblings may be jealous. Mother may inadvertently break the bond with little Charlotte thus sparking feelings of abandonment and rejection. Normal childhood development is then marred by ill feeling. Parents can best help Charlotte by teaching her to understand and express her feelings in

appropriate ways. With strong parental support Charlotte becomes self-confident, able to form and maintain close ties with friends and family members. Commitment to associations and projects then becomes a major strength in Charlotte's life.

Saturn is Conjunct Mars

Charlotte knows how to work and achieve. She has a serious side to her nature that is obvious from a young age. This is because safety and peace of mind play an important role in Charlotte's childhood development. She needs to feel secure and is likely to play her part in achieving a sense of accomplishment and security. While other children are out playing Charlotte is often at work. She is organised, hard working and honest with an ability to work methodically towards her goals. This is quite unusual in a young child. It is important for parents to ensure that Charlotte is working to achieve her own desires rather than taking responsibility for others in the family. There is a temptation for less responsible members of the family to rely on Charlotte. Parents, in particular her father, need to encourage Charlotte to have fun. Charlotte is a practical child and may find it difficult to be frivolous and playful.

It is important that Charlotte is able to enjoy the carefree side of childhood. The more support she receives from her father, or an important father figure, the easier Charlotte finds it to adjust to the different stages of childhood development. She may achieve a prominent position in her career later in life or prove adept in running her own business.

CONCLUSION



"When I was a boy of 14, my father was so ignorant I could hardly stand to have the old man around. But when I got to be 21, I was astonished at how much the old man had learned in seven years." -- Mark Twain "Bringing Up Father"

This report has been written with the aim of helping parents and mentors better understand their youngsters. Of course, each person is ultimately responsible for their own actions, but the support that children get early in life goes a long way to helping them live rich and rewarding adult lives. Children need to be given the freedom to be their true selves rather than being forced to live up to parental expectations or to fulfil parents' own personal journeys. They need their parents to live their own lives to the full, joyously and responsibly. Above all children need love and support. What great gifts and what a challenging role for parents! It is our hope that this report will help in the process of childhood development, supporting both child and parent.

Your Zodiac Child report has been edited and produced by UK astrologer Caroline Moroz. Having studied languages to BA level, and after spending several years in Sales and Marketing, Caroline decided to take up astrology as a complete departure from a successful commercial career. She was the first UK student to gain the Astrological Guild of Educators International Diploma, which she did with distinction. Caroline created and manages her website www.star-maps.co.uk and runs a busy astrological practice in Uppingham, Rutland.

The text in this report has been written by Australian astrologer Stephanie Johnson. Stephanie holds a Bachelor of Arts (Journalism) and was a journalist in Australia, England and the USA for 15 years before becoming a professional astrologer.

The illustrations used in this report have been created by artist, illustrator and teacher, Janet Bridgland. Janet has held a number of exhibitions in art galleries in the city of Adelaide, Australia, as well as having a permanent exhibition of selected works in the boutique book shop, Back Pages Books which she runs with her husband. Janet has illustrated a number of books for the publishing company Calypso and teaches illustration at the Douglas Mawson Institute of TAFE.

This report is meant as an introduction to the wonders of astrology rather than a complete course in its intricacies. For further exploration of this ancient scientific and philosophical tool, a consultation with a professional astrologer is recommended. If you would like further information please contact Caroline Moroz via her website, www.star-maps.co.uk or contact her via email: caroline@star-maps.co.uk

